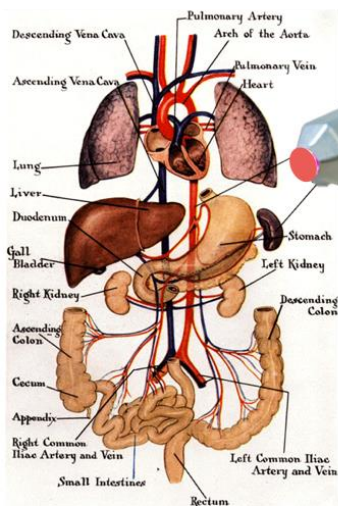
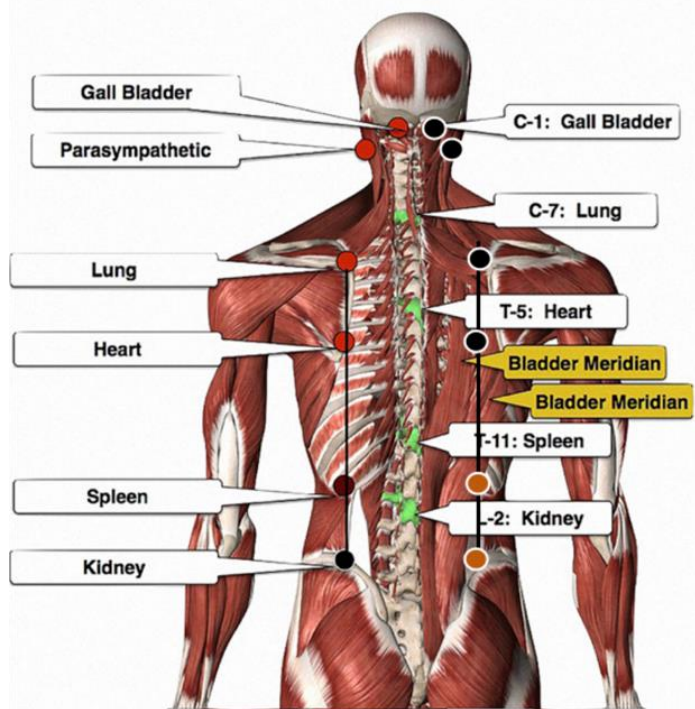
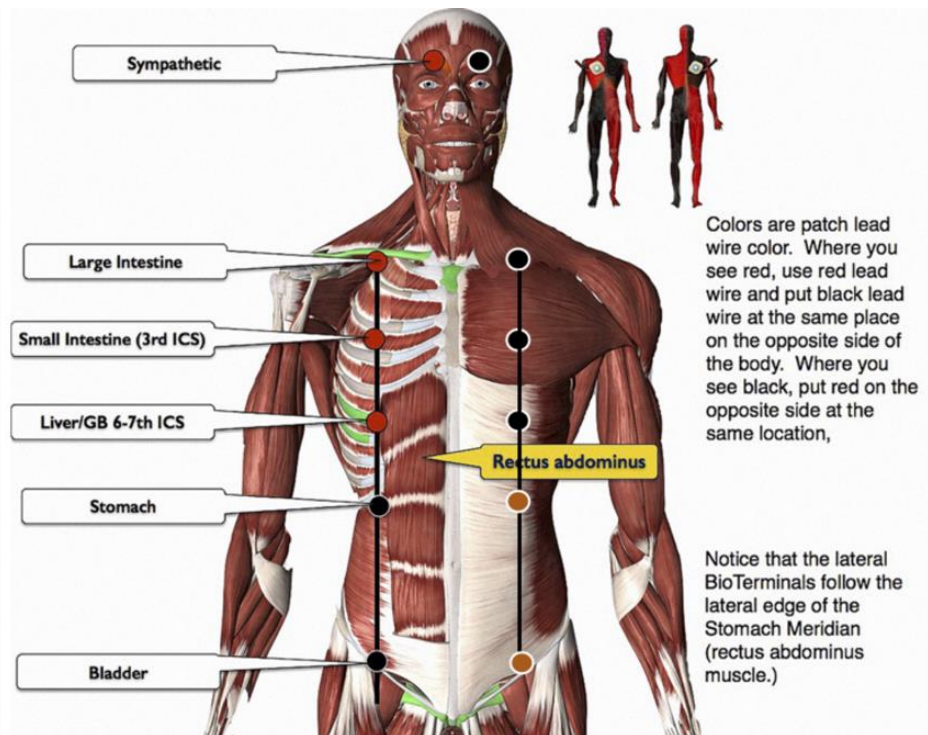


No matter the illness, follow the same procedure:

- Start the Tennant Nutraceutical System so the body has the nutrients to make new cells.
- Always correct the Bowling Ball Syndrome
- Determine the power supply to the symptom: see attached chart
- Treat the organ itself (cell batteries) with the BioTransducer in Infinity
- Recharge the muscle battery pack using patches on its BioTerminals in Ten-8; See next page
- Ask yourself why that battery pack won't hold a charge so you know why they got in trouble in the first place
  - Hypothyroid
  - Scar
  - Emotions
  - Lack of bicarbonate
  - Dental (always the most important)
- Consider toxins if you don't find the reason above or if they don't solve the problem



Aim the BioTransducer at the organ that is malfunctioning. Use Infinity or 783 Harmonics, delta, theta, and alpha frequency sets.



<b>Organs on Meridians</b>						
Bladder	Bladder	Corpus callosum	Mucous Membranes			
Gall Bladder	Gall Bladder	Ear	Emotions	Memory		
Heart	Heart					
Kidney	Kidney	Bone Marrow				
Large Intestine	Large Intestine	Skin	Nose	Shoulder		
Liver	Liver	Brain stem	Optic nerve	Retina	Connective Tissue	
Lung	Nose	Skin	Shoulder and back			
Pericardium (Parasympathetic)	Parasympathetic					
Sanjaio (Triple Heater) (Sympathetic)	Sympathetic	Eye	Lymph			
Small Intestine	Ear	Neck				
Spleen/Pancreas	Spleen (left)	Pancreas (right)	Frontal Lobes	Endocrine	Thyroid	Immune Sytem
Stomach	Stomach	Esophagus	Breast	Nose	Lips	Eyelids
<b>Meridians by System</b>						
Adrenals	Spleen					
Bladder	Bladder					
Body Fluids	Bladder					
Bone Marrow	Kidney					
Brain	Spleen/Pancreas	Bladder	Liver	Gall Bladder		
Breast	Stomach					
Bronchi and Trachea	Large Intestine	Lung				
Connective Tissue	Liver					
Digestion	Small Intestine	Large Intestine	Spleen/Pancreas	Stomach		
Ear	Small Intestine	Kidney	Gall Bladder	Sympathetic		
Emotions	Gall Bladder	Pericardium				
Eye	Sanjaio	Liver (optic nerve, retina)	Stomach (macula)			
Eyelids	Stomach					
Fatigue	Heart	Sanjaio				
Gall Bladder	Gall Bladder					
Gonads	Spleen/Pancreas					
Hair	Bladder					
Heart	Heart	Pericardium				
Kidney	Kidney	Bladder				
Large Intestine	Large Intestine					
Leg	Bladder	Kidney	Spleen	Stomach	Liver	Gall Bladder
Lips	Stomach					
Liver	Liver					
Lung (alveoli)	Heart	Lung				
Lymph	Sanjaio					
Mucous Membranes	Bladder					
Nose	Lung	Large Intestine	Bladder			
Pancreas	Spleen/Pancreas					
Parasympathetic	Pericardium					
Ribs	Spleen/Pancreas	Liver	Gall Bladder			
Skeletal System	Kidney					
Skin	Lung	Large Intestine	Pericardium	Heart		
Small Intestine	Small Intestine					
Spleen	Spleen/Pancreas					
Stomach	Spleen/Pancreas	Stomach				
Sympathetic	Sanjaio					
Thyroid	Spleen/Pancreas					

Some meridians are obvious, e.g., angina will be the heart meridian. However, the following are not as obvious:

- Reproduction and endocrine organs: SP/ST
- Frontal lobe of brain: SP/ST
- Parietal Lobe of the brain: TB/HT
- Temporal lobes of brain: GB
- Corpus callosum (connects two halves of brain): BL
- Brain stem: LV
- Macula, cornea, eyelids: ST
- Retina and optic nerve: LV; LV will be high, GB will be low in glaucoma
- Iris, lens, Schlemm's canal (drainage of eye): Sympathetic (TB)
- Skin: LU/LI
- Mucous membranes: BL
- Ear: GB, TB, SI
- Bone marrow: GB, BL
- Shoulder: LU/LI
- Lymph: TB, SP
- Alveoli of lungs: HT
- Bones: K